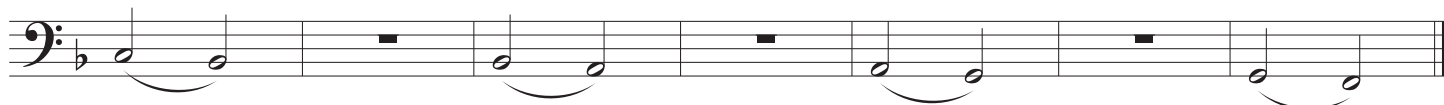


F Descending w/ Releases



7



F Ascending w/ Releases



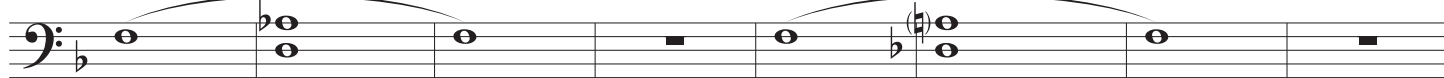
20



F Remington Expanding

*mf*

35



43

**Remember the following while performing all of these exercises:**

1. Always breathe the same regardless of what is being played.
2. Start every note the same (tongue in the same place).
3. Keep the same vowel sound throughout each note.
4. Keep your body still after the end of each note (and during rests).
5. Keep your air flowing to the end of the very last note in each pattern.
6. The air speed must increase for higher notes.
7. Move your fingers with the same energy from note-to-note.
8. All intervals must remain balance, both consonant and dissonant.

Pass-through Exercise

58

66

This section contains three staves of music in bass clef with a key signature of one flat. The first staff starts at measure 58 and ends at measure 65. The second staff starts at measure 66 and ends at measure 73. The third staff starts at measure 74 and ends at measure 81. The music consists of eighth and sixteenth notes, often beamed together in groups of two or four, with various rests and phrasing slurs.

F Remington Alternating

84

This section contains two staves of music in bass clef with a key signature of one flat. The first staff starts at measure 84 and ends at measure 91. The second staff starts at measure 92 and ends at measure 99. The music features alternating eighth and sixteenth notes, often beamed together, with phrasing slurs and rests.

Articulation + Style

96

This section contains two staves of music in bass clef with a key signature of one flat. The first staff starts at measure 96 and ends at measure 103. The second staff starts at measure 104 and ends at measure 111. The music consists of eighth notes, some with accents, and groups of four sixteenth notes. The second staff includes four triplets of eighth notes, each marked with a '3' below it.