

Bass Trombone Rehearsal Skills - Spring 2019

Coppell HS Band

F Descending w/ Releases



7



F Ascending w/ Releases



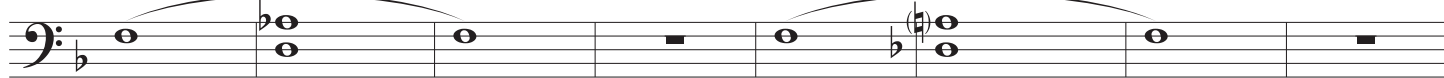
20



F Remington Expanding



35



43



Remember the following while performing all of these exercises:

1. Always breathe the same regardless of what is being played.
2. Start every note the same (tongue in the same place).
3. Keep the same vowel sound throughout each note.
4. Keep your body still after the end of each note (and during rests).
5. Keep your air flowing to the end of the very last note in each pattern.
6. The air speed must increase for higher notes.
7. Move your fingers with the same energy from note-to-note.
8. All intervals must remain balance, both consonant and dissonant.

Pass-through Exercise

58

66

Musical notation for the Pass-through Exercise, measures 58-66. The exercise is written in bass clef with a key signature of one flat (B-flat). It consists of three staves of music. The first staff (measures 58-60) features a sequence of chords: a whole note chord of G2-B2-D3, a half note chord of G2-B2-D3, and a whole note chord of G2-B2-D3. The second staff (measures 61-63) features a sequence of chords: a whole note chord of G2-B2-D3, a half note chord of G2-B2-D3, and a whole note chord of G2-B2-D3. The third staff (measures 64-66) features a sequence of chords: a whole note chord of G2-B2-D3, a half note chord of G2-B2-D3, and a whole note chord of G2-B2-D3.

F Remington Alternating

84

Musical notation for the F Remington Alternating exercise, measures 84-92. The exercise is written in bass clef with a key signature of one flat (B-flat). It consists of two staves of music. The first staff (measures 84-90) features a sequence of chords: a whole note chord of G2-B2-D3, a half note chord of G2-B2-D3, and a whole note chord of G2-B2-D3. The second staff (measures 91-92) features a sequence of chords: a whole note chord of G2-B2-D3, a half note chord of G2-B2-D3, and a whole note chord of G2-B2-D3.

Articulation + Style

96

Musical notation for the Articulation + Style exercise, measures 96-104. The exercise is written in bass clef with a key signature of one flat (B-flat). It consists of two staves of music. The first staff (measures 96-100) features a sequence of chords: a whole note chord of G2-B2-D3, a half note chord of G2-B2-D3, and a whole note chord of G2-B2-D3. The second staff (measures 101-104) features a sequence of chords: a whole note chord of G2-B2-D3, a half note chord of G2-B2-D3, and a whole note chord of G2-B2-D3.