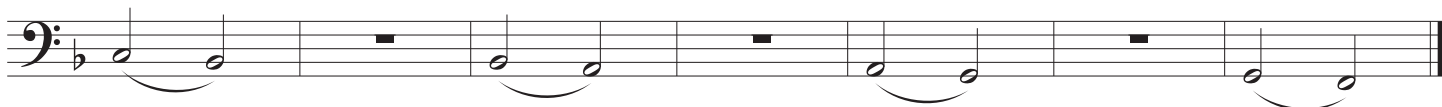


F Descending w/ Releases



7



F Ascending w/ Releases



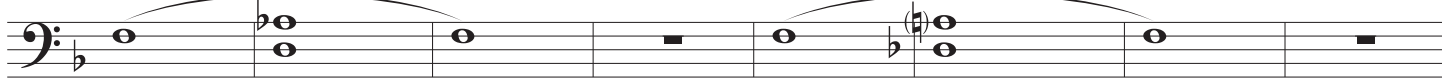
20



F Remington Expanding

*mf*

35



43

**Remember the following while performing all of these exercises:**

1. Always breathe the same regardless of what is being played.
2. Start every note the same (tongue in the same place).
3. Keep the same vowel sound throughout each note.
4. Keep your body still after the end of each note (and during rests).
5. Keep your air flowing to the end of the very last note in each pattern.
6. The air speed must increase for higher notes.
7. Move your fingers with the same energy from note-to-note.
8. All intervals must remain balance, both consonant and dissonant.

Pass-through Exercise

Musical notation for the Pass-through Exercise, measures 58-66. The notation is in bass clef with a key signature of one flat (B-flat). It consists of three staves. The first staff (measures 58-60) features a sequence of chords: a whole note chord of G2, B2, D3; a whole note chord of A2, C3, E3; and a whole note chord of B2, D3, F3. The second staff (measures 61-63) features a sequence of chords: a whole note chord of C3, E3, G3; a whole note chord of D3, F3, A3; and a whole note chord of E3, G3, B3. The third staff (measures 64-66) features a sequence of chords: a whole note chord of F3, A3, C4; a whole note chord of G3, B3, D4; and a whole note chord of A3, C4, E4. Each chord is marked with a fermata.

F Remington Alternating

Musical notation for the F Remington Alternating exercise, measures 84-86. The notation is in bass clef with a key signature of one flat (B-flat). It consists of two staves. The first staff (measures 84-85) features a sequence of chords: a whole note chord of G2, B2, D3; a whole note chord of A2, C3, E3; and a whole note chord of B2, D3, F3. The second staff (measures 86-87) features a sequence of chords: a whole note chord of C3, E3, G3; a whole note chord of D3, F3, A3; and a whole note chord of E3, G3, B3. Each chord is marked with a fermata.

Articulation + Style

Musical notation for the Articulation + Style exercise, measures 96-98. The notation is in bass clef with a key signature of one flat (B-flat). It consists of two staves. The first staff (measures 96-97) features a sequence of chords: a whole note chord of G2, B2, D3; a whole note chord of A2, C3, E3; and a whole note chord of B2, D3, F3. The second staff (measures 98-99) features a sequence of chords: a whole note chord of C3, E3, G3; a whole note chord of D3, F3, A3; and a whole note chord of E3, G3, B3. Each chord is marked with a fermata.