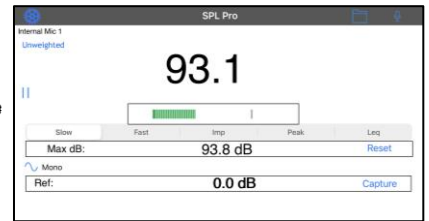


改善 Kaizen

TOOLS OF
THE TRADE

Instilling Continuous Ensemble Development
featuring the Coppell HS Wind Symphony



In Tune • In Tone • In Time

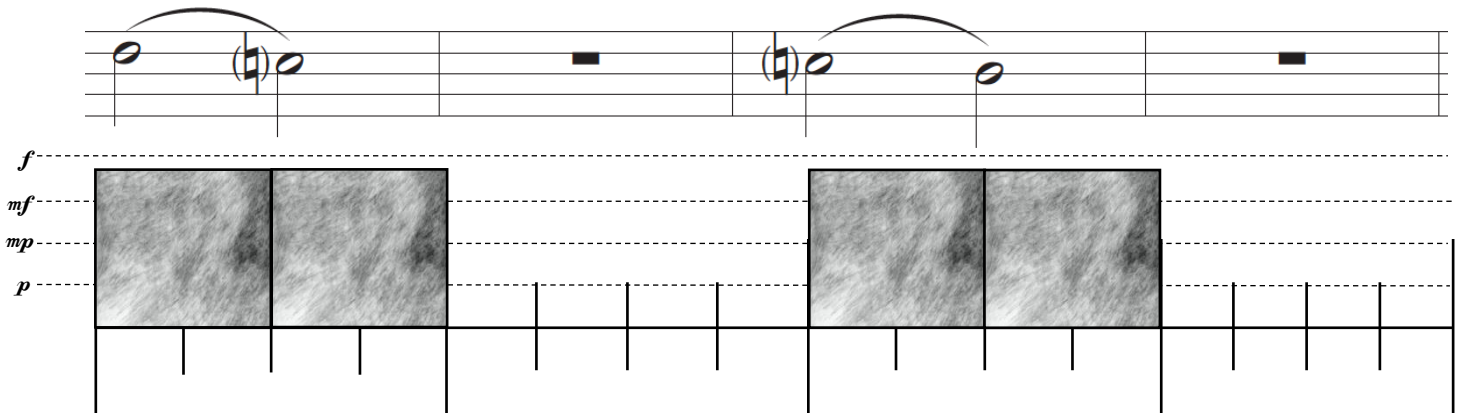


Individual Tuning • Timing • Shape

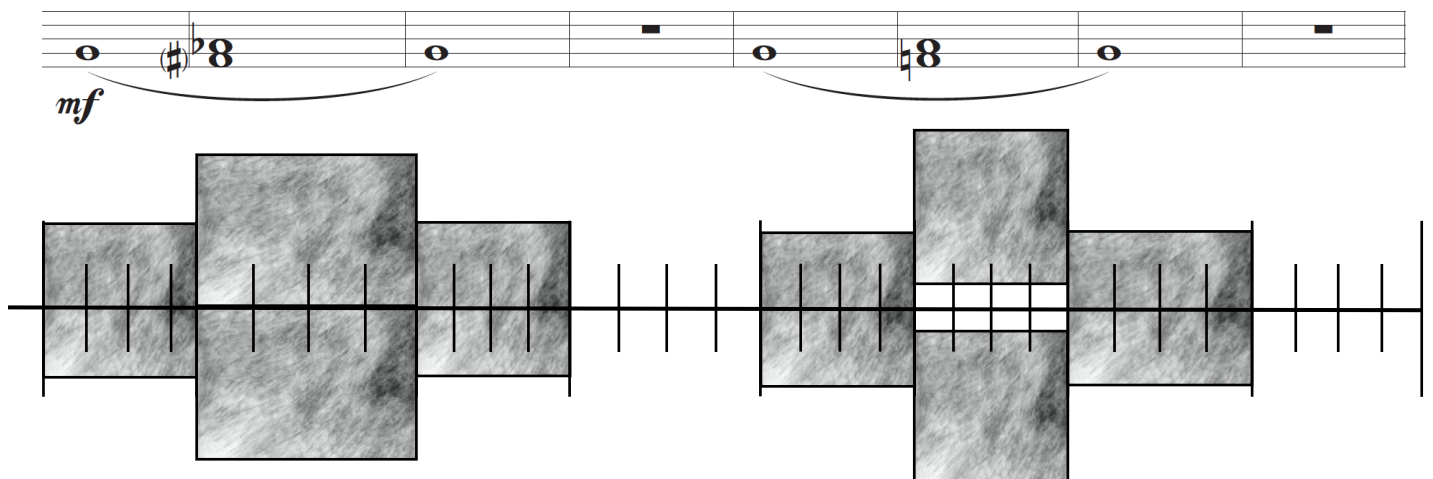


Volume

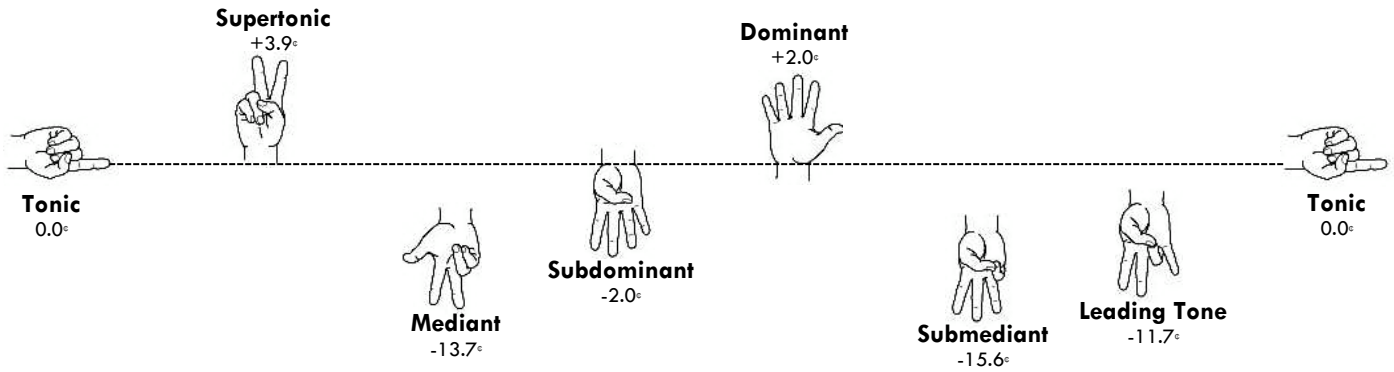
SOUND TO SILENCE | SILENCE TO SOUND



SKIPS AND STEPS



INSTILLING PURE TEMPERAMENT



SEGMENTATION AND DIVISION

3 3 3 3

Gerry Miller

Director of Bands – Coppell HS | Coordinator of Fine Arts – Coppell ISD
 gmiller@coppellisd.com | 214.496.6475